

Collaborating for the Advancement of Interdisciplinary Research in Benign Urology



UW-Madison U54 Urology O'Brien Center Symposium

The CAIRIBU George M. O'Brien Urology Center (PI, William Ricke, PhD) held its annual symposium last month (June 29-30) on the University of Wisconsin-Madison campus. The symposium, *"Targeting Aging in the Lower Urinary Tract,"* featured CAIRIBU-affiliated and other speakers from the University of California San Francisco-Kaiser Permanente, University of Pittsburgh, University of Texas Southwestern, University of Massachusetts Boston, NorthShore University HealthSystem, Baylor College of Medicine, the National Institute of Diabetes, Digestive and Kidney Diseases, the University of Wisconsin-Madison Waisman Center and departments of Nutritional Sciences, Veterinary Medicine, and Biochemistry, and from the University of Wisconsin School of Medicine & Public Health.

The keynote speaker was well-known aging expert **Judith Campisi, PhD** of the Buck Institute for Research on Aging. The symposium poster session featured >20 posters from trainees at Indiana University, Purdue University, UW-Madison, and the CAIRIBU Interactions Core.



NIDDK Workshop on Neurourology

AUGUST 22-23, 2022

Webinar

Monday & Tuesday, August 22-23
Virtual, 8:00-5:00 PM Eastern both days
(7 AM-4 PM Central | 5 AM-2 PM Pacific)

Bridging Basic and Clinical Science to Understand Urologic Disease

Neural mechanisms underlie a range of benign urologic diseases. **A broad range of CAIRIBU investigators and trainees are involved in studying these conditions.** Altered innervation of the bladder, urethra, ureters, prostate, erectile tissue, and/or other pelvic structures has a range of effects - including pain, dysfunction, and/or cross-sensitization - contributing to a spectrum of urologic diseases and conditions. **The overall goal of this workshop is to identify persistent gaps in knowledge related to the interaction between the nervous system and the genitourinary system;** how that interaction contributes to benign urologic diseases and disorders; and how multidisciplinary basic, translational, and clinical research can fill these gaps and ultimately enhance prevention, diagnosis, and therapy of benign urologic conditions. **Abstracts accepted through July 21.** NIDDK Program Contact is Julie Barthold, MD.

Register [HERE](#) | Agenda [HERE](#) | Abstract template [HERE](#)

Speakers include Julie Barthold, MD (NIDDK Project Scientist for CAIRIBU); Janet Keast, PhD; Phillip Popovich, PhD; Stuart Brierley, PhD; Ugur Yilmaz Anatolian, MD; Nathan Tykocki, PhD; Rodica Pop-Busui, MD, PhD; James Hokanson, PhD; Praveen Thumbikat, DVM, PhD; Adam Klausner, MD; Zachary Danziger, PhD; Benedict Kolber, PhD; Rose Khavari, MD; Stuart Reynolds, MD, MPH; Lisa Stowers, PhD; Julie Carlsten, PhD; Jason Kutch, PhD; Charles Hubscher, PhD; Mario Romero-Ortega, PhD; Kara Marshall, PhD



CAIRIBU ARCTICS Community Virtual Monthly Forums

ARCTICS = Advancing the Research Capacity of Trainees and Investigators at

The 2022 series of monthly virtual ARCTICS forums begin this month and run through November 2022. As for the 2021 series of CAIRIBU ARCTICS Community forums, this year's series was planned by a committee of CAIRIBU trainees and early-stage investigators. They met virtually to identify and discuss topics of greatest interest to trainees at all stages of their development. ALL ARE INVITED TO ATTEND!

Strategic Networking: How to Approach Networking at Different Career Stages

Wednesday, July 20 - 1:00 to 2:00 PM Eastern

(12-1 PM Central | 10-12 noon Pacific)

Zoom link available [HERE](#)

Effective networking can produce meaningful connections that lead to career opportunities and fruitful collaborations. How should graduate students and postdocs approach networking? How can early-stage independent investigators continue building their networks? This forum will feature a panel of investigators at a variety of career stages. Future forums will address:

- **Creating a path toward becoming a postdoc, fellow, or K12 scholar** (August). Never too early to start planning! This forum will feature a panel of K12 Program leaders and established investigators who will answer questions about what makes a good candidate.
- **Developing an overarching research agenda** (September). Panelists at various career stages will discuss how to set research priorities and establish short, medium, and longterm goals.
- **Outstanding CVs and biosketches can set you apart from the rest** (October). Hear from a professional from the University of Wisconsin-Madison Writing Center and others about constructing and maintaining an academic CV and writing your NIH biosketch.

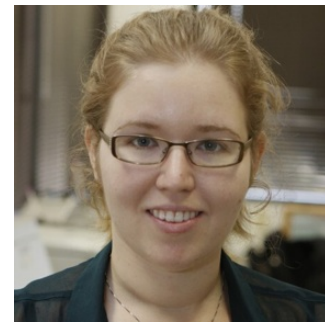
Join Drs. Sarma, Karstens, and DeNisco (below) at the July 2022 CAIRIBU ARCTICS Community forum



Aruna Sarma, PhD, Co-PI of the CAIRIBU K12 KUroEpi Program at the University of Michigan



Lisa Karstens, PhD, Assistant Professor of Medical Informatics and Clinical Epidemiology at Oregon Health Sciences University



Nicole DeNisco, PhD, Assistant Professor of Biological Sciences at the University of Texas Dallas

Recent CAIRIBU Publications



Columbia University medical school student **Gregory Wiessner** (far left, top) and Columbia University CAIRIBU O'Brien Center PI **Cathy Mendelsohn, PhD** (far left, middle) were first and senior authors, respectively, of a review published in *Development* (May 2022) in which they surveyed current knowledge of urothelial progenitor populations during organogenesis and regeneration and reviewed pathways and signaling mechanisms driving urothelial differentiation.



Duke University K12 KURe Program PI **Cindy Amundsen, MD** (far left, bottom) was senior author of a paper in *Int Urogynecol J* (May 2022) in which sacral neuromodulation in women with urgency urinary incontinence variably affected the urinary microbiome.

Jon Ellison, MD (near left, top), a co-investigator with the Medical College of Wisconsin P20 Exploratory Center (PI, Kathryn Flynn, PhD) co-authored a paper with **Gregory Tasian, MD, MSc, MSCE** (near left, middle), PI of the P20 Exploratory Center at the Children's Hospital



CAIRIBU Interactions
Core staff search
PubMed monthly to
find publications
featuring CAIRIBU-
affiliated authors.



CAIRIBU publications
can be found in the
drop-down menu of
the "**Research
Resources**" page of
the CAIRIBU website
[HERE](#).

of Philadelphia-University of Pennsylvania. Published in *BMJ Open* (April 2022), the team described the methods and rationale for their groundbreaking trial to compare effectiveness of surgical modalities in pediatric patients with urolithiasis.

Jonathan Barasch, MD, PhD (near left, bottom), a Co-PI of the Columbia University CAIRIBU O'Brien Center was senior author of a paper in *JCI Insight* (March 2022) in which they explored alternatives to serum creatinine as a marker of acute renal tubular injury. Using mice, the team demonstrated that a specific RNA tagging method could better and more quickly identify acute kidney injury.

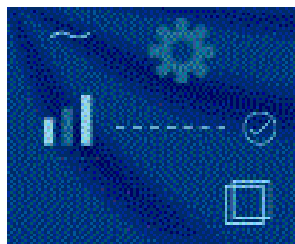


American
Urological
Association

AUA Opportunities for Trainees and Early- Career Investigators

- **AUA Early-Career Investigators Workshop.** [October 13-15, 2022](#) at AUA Headquarters in Linthicum, MD. Workshop agenda is designed to foster career success and skills for successful grant writing. Program includes didactic learning, small group proposal review and critique, grant review/revision, and a mock study section. ALL MDs and PhDs (or equivalent) are eligible to apply if they have not previously received extramural R01 or independent funding as PI. Nomination packages are due July 18! [Links to more info](#) [HERE](#).
- **Establishing Your Independent Urologic Research Lab.** Course consists of 4 modules viewed virtually, on your own. [Course is FREE to AUA members](#) (otherwise costs \$39). Faculty include Dolores Lamb, PhD, HCLD (course director); Li Xin, PhD; and Margo Damaser, PhD. Topics covered include negotiating your start-up package, establishing your lab, lab management, and translating your research for maximum clinical impact. More info on CAIRIBU website [HERE](#).

More NIDDK Workshops of Interest to CAIRIBU Community Investigators



Healthy Reference Tissue and Standards

Monday, July 25 - Virtual
10:00-5:00 PM Eastern
(9-4 PM Central | 7-2 PM Pacific)

Multiple cell and tissue atlas projects are underway around the globe. These efforts aim to produce community resources and foster an understanding of health and disease. During this workshop, participants will discuss the challenges and best practices for obtaining and using healthy reference tissue as a benchmark for disease and to assess the technical variability of



Research Advances for Urologic Chronic Pelvic Pain Syndrome: Informing the Next Generation of Clinical Studies

Monday & Tuesday, Oct. 17-18
On site at the Natcher Conference Center,
NIH Headquarters, Bethesda, MD

Urologic Chronic Pelvic Pain Syndrome (UCPPS) represents both Interstitial Cystitis/Bladder Pain Syndrome and Chronic Prostatitis/UCPPS. This meeting will provide a forum for exchange of new insights into

imaging and -omic assays.

More info [HERE](#)

NIDDK Program Contacts: Daniel Gossett,
PhD and Eric Brunskill, PhD

UCPPS underlying mechanisms and clinical characteristics.

More info [HERE](#)

NIDDK Program Contact: Chris Mullins, PhD

2022 Annual CAIRIBU Meeting



Wednesday through Friday,
November 30 through December 2

*North Bethesda Marriott Hotel & Conference Center,
Bethesda, MD*

All CAIRIBU investigators and trainees from current CAIRIBU Centers and Programs are expected to attend. Block your calendars now.

This includes investigators from CAIRIBU Centers and Programs whose grant cycles ended within the past year. **The meeting begins at 1:00 PM on Wed., Nov. 30 and concludes at 1:00 PM on Fri., Dec. 2.** Registration and program info will be available later this month. Keep checking CAIRIBU website [HERE](#) for details as they become available, including about trainee/ESI abstract submissions.

- **TRAINEE/ESI PRE-MEETING.** Planned by CAIRIBU trainees and ESIs. This event begins at 9:00 AM on Wednesday, November 30 and concludes at 12 noon. Full agenda available shortly.
- **ABSTRACTS.** Trainees and early-stage investigators... **GET READY TO SUBMIT ABSTRACTS.** Call for abstracts in August; abstract submission deadline will mid-October. **Abstracts accepted for moderated poster sessions during the meeting will be limited to 50.**
- **HOTEL ROOMS.** Hotel room availability and information will be available later this month.

2022 CAIRIBU Collaboration Awards



Betsy Salazar, PhD (top left) is a Research Scientist in the laboratory of former University of Pittsburgh O'Brien Center Opportunity Pool awardee Rose Khavari, MD (Houston Methodist). Dr. Salazar was



awarded one of two CAIRIBU Collaboration Awards for her proposal, *"Characterization of spinal neural networks involved in the control of the lower urinary tract: a novel spinal fMRI feasibility trial."* Dr. Salazar earned a PhD in Biomedical Engineering from the University of Houston and then completed a postdoc where she worked on therapeutic strategies promoting remyelination and motor recovery in patients with spinal cord injuries. She recently joined the Khavari lab to begin focusing on the brain-bladder connection.



Nazema Siddiqui, MD, MHSc (bottom left) is a urogynecologist and Associate Professor at Duke University and a former K12 KURE Scholar in the CAIRIBU KURE Program at Duke University. Dr. Siddiqui was awarded a CAIRIBU Collaboration Award for her proposal, *"Development of humanized mouse models for studies of the urogenital microbiome."* Dr. Siddiqui completed an Obstetrics & Gynecology residency at Cleveland Clinic and then a fellowship in Female Pelvic Medicine & Reconstructive Surgery at Duke University.

Upcoming Meetings and Events

- July 11: DEADLINE for [abstract submissions for 2022 SBUR meeting](#)
July 14: [All CAIRIBU Community Leaders meeting](#) (4 PM Eastern, virtual)
July 18: DEADLINE for nomination packages for [AUA Early-Career Investigator Workshop](#)
- Aug 1-5: [Molecular Genetics of Bacteria and Phages Meeting](#) (in-person, Madison, WI)
Aug 11: [CAIRIBU O'Brien Centers Leaders meeting](#) (4 PM Eastern, virtual)
Aug 22-23: [NIDDK Workshop on Neurourology](#) (8-5 PM Eastern, virtual)

Aug 28-31: [North Central Section of the AUA annual meeting](#) (in-person, Chicago, IL)

Sept 8: [ALL CAIRIBU Community Leaders meeting](#) (4 PM Eastern, virtual)

Sept 28-29: [NIDDK Workshop on Congenital Kidney Disease](#) (NIH Headquarters + hybrid)

Oct 13: [CAIRIBU O'Brien Centers Leaders meeting](#) (4 PM Eastern, virtual)

Oct 13-14: [AUA Early-Career Investigators Workshop](#) (AUA Headquarters, Linthicum, MD)

Oct 17-18: [NIDDK Workshop on Pelvic Pain](#) (NIH Headquarters, Bethesda, MD)

Nov 10-13: [Society for Basic Urologic Research Meeting](#) (in-person, Orlando, FL)

Nov 30-Dec 2: [Annual CAIRIBU Meeting](#) (in-person, Bethesda, MD)

Check the [Events Listing](#) on the CAIRIBU website for updates and other announcements

Grant Funding



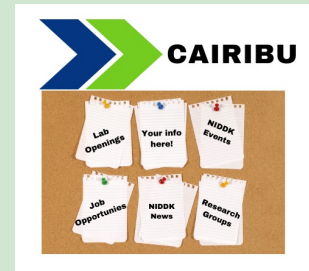
The [Stanford University George M. O'Brien U54 Urology Research](#)

[Center](#) seeks applications for its 2022 Opportunity Pool Awards Program. Contact [Dr. James Brooks](#).

MORE FUNDING OPPORTUNITIES. Check the CAIRIBU website [funding page](#) for announcements. Currently, NIDDK grant applications for the SUITOR Program are sought; details [HERE](#).

Events, Jobs, News

Check the [CAIRIBU Kiosk](#) frequently for updates. Several job openings are currently listed, including at **Beaumont Health-Oakland University** and **Stanford University**. Also note openings for K12 Scholars at CAIRIBU-affiliated KUroEpi (UCSF-Kaiser Permanente) and KURe Programs (UW-Madison).



HAVE YOU READ?

Are you aware of the newest research from investigators and trainees in the CAIRIBU Community? The list is updated monthly and available on the CAIRIBU website [HERE](#).



HAVE YOU WATCHED?

The [CAIRIBU YouTube Channel](#) features video presentations by CAIRIBU K12 Scholars and from CAIRIBU Catalyst Conversations, CAIRIBU ARCTICS forums, and lectures and presentations from the 2021 annual CAIRIBU meeting.



Email the CAIRIBU Interactions Core

George M. O'Brien (U54) Urology Cooperative Research Centers Program

- University of Wisconsin-Madison (2014-2019 and 2019-2024)
- Columbia University (2014-2019 and 2020-2025)
- Stanford University (2021-2026)

Multidisciplinary Urologic Research (KURe) Career Development Programs (K12)

- Duke University
- University of Wisconsin-Madison

Urological Epidemiology (KUroEpi) Institutional Research Career Development Programs (K12)

- UCSF-Kaiser Permanente

Kristina L. Penniston, PhD, RDN, FAND

PI, CAIRIBU U24 Interactions Core (U24-DK127726)

penn@urology.wisc.edu

Department of Urology, University of Wisconsin School of Medicine and Public Health, Madison, WI

Exploratory Centers (P20) for Interdisciplinary Research in Benign Urology

- William Beaumont School of Medicine, Oakland University (2021-2023)
- Children's Hospital of Philadelphia-University of Pennsylvania (2020-2022)
- Medical College of Wisconsin (2020-2022)
- University of Alabama at Birmingham (2018-2020 and 2020-2022)
- Albert Einstein College of Medicine (2019-2021)
- Duke University (2019-2021)
- University of Tennessee (2019-2021)
- Vanderbilt University (2019-2021)

Links to websites for all CAIRIBU Centers and

- University of Michigan

Programs are on the CAIRIBU website [HERE](#)

Collaborating for the Advancement of Interdisciplinary Research in Benign Urology

CAIRIBU is a community of NIDDK-funded Centers and Programs whose overarching objectives are to address the gaps in knowledge related to epidemiology, etiology, development, progression, and expression of benign urologic conditions and to train the next generation of leaders in benign urology research

[Learn More Here](#)