



CAIRIBU COMMUNIQUE July 2021

**George M. O'Brien (U54) Urology Cooperative
Research Centers Program**
University of Wisconsin-Madison
Columbia University
University of Pittsburgh

**Multidisciplinary Urologic Research (KURe)
Career Development Programs (K12)**
Duke University
University of Wisconsin-Madison

**Urological Epidemiology (KUroEpi) Institutional
Research Career Development Programs (K12)**
UCSF-Kaiser Permanente
University of Michigan

Exploratory Centers (P20) for Interdisciplinary Research in Benign Urology

Beth Israel Deaconess Medical Center-Harvard
University
University of Alabama at Birmingham
Washington University
NorthShore University HealthSystem
Columbia University
Duke University
Albert Einstein College of Medicine
University of Tennessee
Vanderbilt University
Children's Hospital of Philadelphia-University of
Pennsylvania
Medical College of Wisconsin

Collaborating for the Advancement of Interdisciplinary Research in Benign Urology

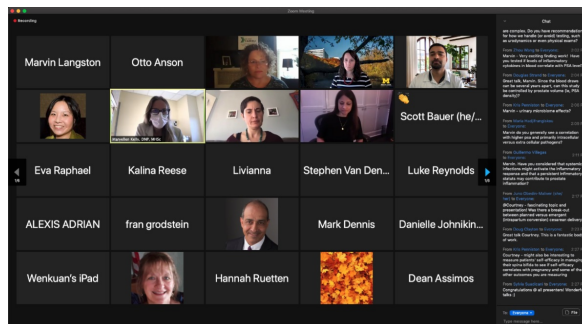
CAIRIBU is a community of NIDDK-funded Centers and Programs whose overarching objectives are to address the gaps in knowledge related to epidemiology, etiology, development, progression, and expression of benign urologic conditions and to train the next generation of leaders in benign urology research

[Learn More Here](#)

Call for Abstracts CAIRIBU Meeting 2021

The annual meeting will be virtual
Thursday & Friday, December 2-3
Abstracts are now being accepted

Abstract deadline: October 11; no extensions
Abstract guidelines: [HERE](#)



In brief, abstracts must be structured and no more than 2,330 characters (not including spaces, title, authors' names, or authors' affiliations). Tables, figures, and graphics account for 225 characters each. An author may submit up to 3 abstracts as presenter, but only one will be eligible for an oral presentation of any kind. Printed abstracts will be made available in a booklet to all meeting registrants.

As last year, authors of accepted abstracts will be invited to (1) prepare a poster that will be available on the CAIRIBU website (as a PDF) for viewing during the meeting; and (2) prepare a pre-recorded 1-minute oral presentation using only their poster as a slide. Following oral presentations, presenters will each host discussion in their own Zoom breakout rooms; meeting attendees will be invited to go in and out of rooms. "Best poster" awards will be based on presenters' posters and oral presentations. All abstracts will be evaluated by expert reviewers. Evaluation criteria are available [here](#) and include context and interest, experimental design, data presentation, data analysis, and written communication.



CAIRIBU ARCTICS Community

Advancing the Research Capacity of Trainees
and Investigators at early Career Stages
Virtual Forum

Wednesday, July 7th
1 PM Eastern (12 PM Central)

GRANT APPLICATION PROCESS, PART 2:
You've got a good research question,
now what?



Collaborating for the Advancement of
Interdisciplinary Research in Benign Urology

CAIRIBU ARCTICS Community forums are virtual education and career-building opportunities for trainees and early-stage investigators. The next forum is:

Wednesday, July 7, 2021, 1:00 PM EDT
(12 PM Central | 10 AM Pacific)

Presenter: [Julie Barthold, MD](#), NIDDK
Program Officer and CAIRIBU Project
Scientist

Topic: The grant application process,
you've got a good research question, now
what?

Dr. Barthold will provide an overview of the
NIH, the grant submission and review
processes, and tools for grant submission
and funding. Established investigators will
also be on hand to discuss their grant
writing experiences and lessons learned.

[Zoom Link Here](#)

CAIRIBU ARCTICS Community forums are
on the first Wednesdays of each month at
1:00 PM Eastern (12 Central)

August 4, 2021 topic: Essential skills for
the successful 21st century biomedical
scientist - how to know what you need to
know to succeed

More information about monthly CAIRIBU
ARCTICS Community forums, including
materials from prior forums, is [HERE](#)

U54 GEORGE M. O'BRIEN CENTER FOR BENIGN
UROLOGY RESEARCH
University of Wisconsin - Madison Department of Urology presents:



with support from:



Collaborating for the Advancement of Interdisciplinary Research in Benign Urology

2nd Thursday
each month

The K12 Scholar Seminar Series features
invited presentations by K12 scholars from
Multidisciplinary Urologic Research (KUR) and
Urological Epidemiology (KUroEpi)
Institutional Research Career Development
Programs. The next seminar is:

Thursday, July 8, 2021, 5:00 PM EDT
(4 PM Central | 2 PM Pacific)

Presenter: [Casey Steadman, PhD](#), K12
Scholar, Duke KUR Program

Topic: Kilohertz frequency spinal cord
stimulation for the restoration of bladder
function after spinal cord injury

The CAIRIBU K12 Scholar Seminar Series
is sponsored by the University of
Wisconsin-Madison George M. O'Brien U54
Urology Center.

[Zoom Link Here](#)

K12 Seminar Series presentations are on
the second Thursdays of each month at
5:00 PM Eastern (4 Central)

August 12, 2021 invited speaker: [Eva
Raphael, MD, MPH](#), K12 Scholar, UCSF-
Kaiser Permanente KUroEpi Program. Dr.
Raphael's topic is: Prevalence, risk factors,
and spatial distribution of bacteriuria
caused by antimicrobial-resistant *E. coli*

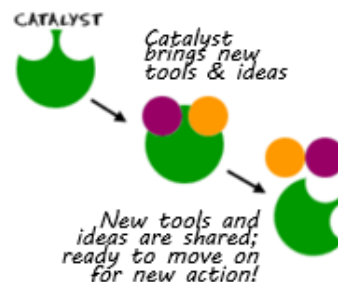
For the schedule of upcoming invited
speakers and their topics, go [HERE](#)

CAIRIBU Catalyst Conversations

with Hunter Wessells, MD, Professor and Chairman,
Department of Urology, University of Washington

Wednesday, July 14, 2021, 2:00 PM Eastern
(1 PM Central | 11 AM Pacific)

Join [Dr. Hunter Wessells](#) and investigators from CAIRIBU and the
broader benign urologic research community for a conversation about
how surveys and other information-gathering tools were used among
patients in the UroEDIC cohort to phenotype various urological complications in type 1 diabetes. **Dr.
Wessells will address the development of these tools and the translation of research findings,
specifically those related to male erectile dysfunction, to clinical practice and to broader priorities for**



clinical/translational and basic science research. A panel discussion of epidemiological, clinical, and basic science researchers engaged in benign genitourinary research will follow to stimulate and target discussion to understanding how lessons from the UroEDIC study can be adapted to research in other areas of the lower urinary tract and to improvements in clinical management. [Zoom link HERE](#).

CAIRIBU Connections

Informal meet-and-greet virtual gatherings of CAIRIBU and non-CAIRIBU investigators who are engaged in similar research



**CAIRIBU
Connections**

JULY 21, 2021
1:30 PM EASTERN
12:30 PM CENTRAL

Lower urinary tract microbiome

Wednesday, July 21, 2021 | 1:30 PM Eastern

(12:30 PM Central | 10:30 AM Pacific)

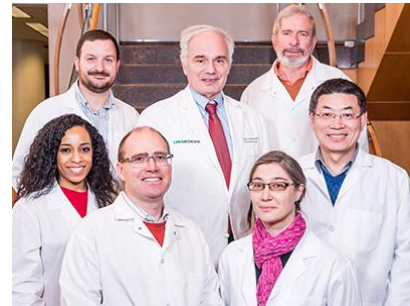
Microbiome of Lower Urinary Tract

DISCUSSANTS: **Nazema Siddiqui, MD** (Duke University), **Catherine Putonti, PhD** (Loyola University Chicago), **Maria Hadjifrangiskou, PhD** (Vanderbilt University), **Aaron Miller, PhD** (Cleveland Clinic), **Lisa Karstens, PhD** (Oregon Health & Science University), **Tatyana Sysoeva, PhD** (University of Alabama at Huntsville), and **Maryellen Kelly, DNP, MHSc** (Duke University).

Anyone and everyone interested in microbiome research is encouraged to attend. Investigators at various stages of their careers will share ideas, get feedback, develop research priorities, and discuss potential collaborations. Primary goals are to learn about cutting-edge work being done by others and to foster ongoing research collaborations. No need to register. Be part of the discussion! [Zoom link HERE](#).

CAIRIBU P20 Exploratory Center Conference on Obesity

The University of Alabama at Birmingham P20 Exploratory Center for Interdisciplinary Research in Benign Urology (the Center for Research on Obesity and Oxalate Kidney Stones) - is hosting a one-day conference on mechanisms and treatment of obesity.



Friday, August 20, 2021 | 9:00-4:15 PM Central
At University of Alabama at Birmingham

During the first half of the day, mechanisms and phenotyping of obesity are addressed in talks on metabolic phenotypes of obesity, obesity and the kidney and liver, animal models of obesity, and the microbiome and intestinal permeability in obesity. **The second half of the program addresses obesity treatments** and will feature talks on obesity and kidney stones, lifestyle interventions for obesity, dietary interventions to treat fatty liver disease, and other novel therapeutic approaches for obesity.

If you are interested in obesity in the lower urinary tract Dr. Dean Assimos, PI of the UAB P20 Center, encourages you to attend! For more information and details, go [HERE](#) or contact Dr. Assimos directly (deanassimos@uabmc.edu).

Have You Read?

Are you up to date on the newest research from the CAIRIBU Community?



[Click Here](#)

Call For Abstracts



The GenitoUrinary Development Molecular Anatomy Project ([GUDMAP](#)), funded jointly by the NIDDK and NICHD, was established 15 years ago to create a detailed molecular map of genitourinary tract development. **The benign GU research community is invited to the virtual GUDMAP Jamboree, Monday & Tuesday, August 23-24, 2021.** Interested researchers are invited to submit poster abstracts describing their ongoing or completed work related to GUDMAP goals and GUDMAP data. Topics for posters should include:

- Scientific progress or accomplishments that advance GUDMAP goals



**New in
Benign
GU Research**

- Demonstration of how GUDMAP data is used for new insights

Deadline for submission is July 20. Notification of acceptance is August 5. Click below for registration and abstract submission details.

Sign up for the "New in Benign Urology Research" mailing list to receive monthly updates

Receive a list of recently published benign GU research once a month; sign up [HERE](#)

[More Info Here](#)



CAIRIBU Collaboration Award

Congratulations to Duke University K12 Scholar **Dr. Maryellen Kelly** on receiving a CAIRIBU Interactions Core Collaboration Award for her proposal "*Composition of the Urinary Microbiome in Children.*" Dr. Kelly is joined by Co-PI **Dr. Tatyana Sysoeva** (University of Alabama at Huntsville) and Co-Investigator **Dr. Lisa Karstens** (Oregon Health and Science University). They have formed a new research collaboration to (1) evaluate, with species-level resolution, the urinary microbiome and composition of children, and (2) compare the urinary microbiome in pilot cohorts of children with and without rUTI. Long-term goals of the project are to develop a non-invasive clinical urine test that can predict children at high risk for rUTI and to develop a non-antibiotic intervention strategy for reducing rUTI in the identified at-risk population.



TRAVEL FUNDS AVAILABLE



Travel-related expenses associated with upcoming **CAIRIBU-related events** (e.g., conferences, symposia, meetings) may be reimbursed to eligible applicants - up to \$2,000 per event may be requested. Applicants to the CAIRIBU Travel Grants Program must be engaged in benign urology research and be **students, postdoctoral trainees, or early stage investigators**.

ORGANIZERS: For each event, CAIRIBU U54 O'Brien Centers, P20 Exploratory Centers, and K12 KUR and KUroEpi Programs may offer up to 3 travel grants. These are typically offered to individuals with accepted abstracts, but other criteria may apply, depending on your event. Contact CAIRIBU Interactions Core director [Dr. Kristina Penniston](#) for more information.

The American Urological Association Office of Research will offer **travel support to early-career investigators** to participate in the 2021 Basic Sciences Symposium: "*Microbes and Inflammation in Urology*," to be held at the AUA Annual Meeting on Sunday, September 12 in Las Vegas, Nevada. The deadline to apply for travel support is **7/12/2021**.

Medical or graduate school students, clinical or postdoctoral fellows, or early-career investigators within 10 years of residency or postdoctoral training may apply. Travel award recipients will receive a stipend of between \$300 and \$1,000 depending on financial need, distance traveled, relevance of the applicant's research interests and activities, and application quality.

[Learn More Here](#)

[Application Information Here](#)



[Email the CAIRIBU Interactions Core](#)

Kristina L. Penniston, PhD, RDN, FAND

**PI, CAIRIBU U24 Interactions Core
(U24-DK127726)**

**Department of Urology
University of Wisconsin
School of Medicine and Public Health
1685 Highland Avenue, 3rd floor MFCB
Madison, WI 53705-2281**