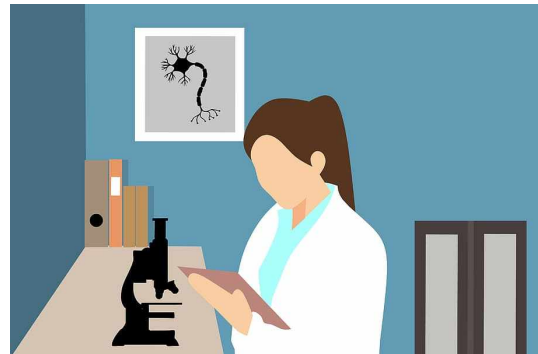


Call for Applicants!

**CAIRIBU
CONVERGENCE
AWARDS**

Applications should relate to the research objectives of either the University of Wisconsin-Madison or University of Pittsburgh George M. O'Brien Cooperative Urology (U54) Centers. Before developing a proposal, prospective applicants should discuss their ideas with the Principal Investigator at the Center to which they apply. Collaborative and interdisciplinary proposals, especially those that embrace CAIRIBU's research goals (see below) are especially requested. Each award allows up to \$100,000 per year in direct costs for a maximum of 2 years. Eligibility is not restricted to any career stage or research area; investigators not affiliated with a CAIRIBU Center or Program are invited to apply. **The deadline is 2/26/2021.**

[More info here!](#)



**CAIRIBU
INTERACTIONS CORE
COLLABORATION
AWARDS**

Applications for short-term, novel, high-risk proposals are requested. Applications that address multiple CAIRIBU research goals (see below) will be prioritized. Two awards are available, each allows up to \$50,000 in direct research costs for 1 year. Applicants are eligible if they are affiliated with a CAIRIBU U54 George M. O'Brien or P20 Exploratory Center or a KURe or KUroEpi Program. **The deadline is 4/01/2021.**

GET INVOLVED!



As we begin to ramp up for the 2021 Annual CAIRIBU Meeting, consider offering your expertise on a planning committee. Members needed for both the Program Committee and the Poster/Abstract Committee. Contact [Kris Penniston, PhD, RDN](#) to learn more.

Mark Your Calendars

UPCOMING EVENTS



SUFU 2021 Winter Meeting

Society of Urodynamics, Female
Pelvic Medicine and Urogenital
Reconstruction
February 25 - 27, 2021
Virtual Meeting

2021 Benign Urology Research Symposium

Duke Multidisciplinary Benign
Urology Research Symposium
April 29 - 30, 2021
Virtual Meeting

R.O.C.K. Society

Research on
Calculus Kinetics

Research on Calculus Kinetics
Annual Meeting
May 21 - 22, 2021
Virtual Meeting



American Urological Association
Annual Meeting
September 10 - 13, 2021
Las Vegas

2021 Annual CAIRIBU Meeting December 1-3

Mark your calendars now. The meeting will be in the Washington, DC area. Typically, we meet half-day on Wednesday (afternoon), all day on Thursday, and half-day on Friday (morning). Details will be made available as soon as possible. We are planning for an in-person meeting this year but will go virtual if/as needed. Leadership for the meeting program will come out of CAIRIBU Community Leaders and O'Brien Centers Leaders meetings, in concert with NIDDK Program Officers and the CAIRIBU U24 Interactions Core.



Keep checking the CAIRIBU website under "Events" for details as they become available, including for abstract submission guidelines.

Travel Grants for Early Investigators and Students

For travel-related expenses related to CAIRIBU-hosted events (e.g., conferences, symposia, meetings), eligible applicants may be awarded up to \$2,000 reimbursement for their participation.



CAIRIBU P20 Exploratory Center at CHOP/University of Pennsylvania Offers Two Educational Enrichment Programs

CHOP-University of Pennsylvania P20 Center for Machine Learning in Urology announces 2 new programs. One is a summer internship providing a two month research experience for medical or graduate students. This will be virtual if needed. The other is an inter-institutional exchange program whereby a CHOP-Penn trainee will go to a collaborative research site to develop research and potential collaborations and, simultaneously, a trainee/junior investigator from the other site will go to CHOP-Penn. Click [HERE](#) to learn more and complete applications. Please contact CHOP P20 Center PI Gregory Tasian, MD, MSCE at TasianG@chop.edu with any questions or for more information.

Have You Read This?



Are you up to date on the [newest benign GU research?](#)



Email Us Today!

Kristina L. Penniston,
PhD, RDN, CD, FAND

Department of Urology

University of Wisconsin

School of Medicine and Public Health

Highland Avenue, 3258 MFCB

Madison, WI 53705-2281

