



CAIRIBU COMMUNIQUE August 2021

**George M. O'Brien (U54) Urology Cooperative
Research Centers Program**
University of Wisconsin-Madison
Columbia University
University of Pittsburgh

**Multidisciplinary Urologic Research (KURe)
Career Development Programs (K12)**
Duke University
University of Wisconsin-Madison

**Urological Epidemiology (KUroEpi) Institutional
Research Career Development Programs (K12)**
UCSF-Kaiser Permanente
University of Michigan

Exploratory Centers (P20) for Interdisciplinary Research in Benign Urology

Beth Israel Deaconess Medical Center-Harvard
University
University of Alabama at Birmingham
Washington University
NorthShore University HealthSystem
Columbia University
Duke University
Albert Einstein College of Medicine
University of Tennessee
Vanderbilt University
Children's Hospital of Philadelphia-University of
Pennsylvania
Medical College of Wisconsin

Collaborating for the Advancement of Interdisciplinary Research in Benign Urology

CAIRIBU is a community of NIDDK-funded Centers and Programs whose overarching objectives are to address the gaps in knowledge related to epidemiology, etiology, development, progression, and expression of benign urologic conditions and to train the next generation of leaders in benign urology research

[Learn More Here](#)

Call for Abstracts - CAIRIBU Meeting 2021

The annual meeting will be virtual
Thursday & Friday, December 2-3
Abstracts are now being accepted

Abstract deadline: October 11; no extensions
Abstract guidelines: [HERE](#)



In brief, abstracts must be structured and no more than 2,330 characters (not including spaces, title, authors' names, or authors' affiliations). Tables, figures, and graphics account for 225 characters each. An author may submit up to 3 abstracts as presenter, but only one will be eligible for an oral presentation of any kind. Printed abstracts will be made available in a booklet to all meeting registrants.

As last year, authors of accepted abstracts will be invited to (1) prepare a poster that will be available on the CAIRIBU website (as a PDF) for viewing during the meeting; and (2) prepare a pre-recorded 1-minute oral presentation using only their poster as a slide. Following oral presentations, presenters will each host discussion in their own Zoom breakout rooms; meeting attendees will be invited to go in and out of rooms. "Best poster" awards will be based on presenters' posters and oral presentations. All abstracts will be evaluated by expert reviewers. Evaluation criteria are available [here](#) and include context and interest, experimental design, data presentation, data analysis, and written communication.

--	--



CAIRIBU ARCTICS Community

Advancing the Research Capacity of Trainees
and Investigators at early Career Stages
Virtual Forum

Wednesday, August 4th
1 PM Eastern (12 PM Central)

**ESSENTIAL SKILLS FOR
THE SUCCESSFUL 21ST CENTURY
BIOMEDICAL SCIENTIST**



Collaborating for the Advancement of
Interdisciplinary Research in Benign Urology

CAIRIBU ARCTICS Community forums are virtual education and career-building opportunities for trainees and early-stage investigators. The next forum is:

Wednesday, August 4, 2021, 1:00 PM EDT

(12 PM Central | 10 AM Pacific)

Topic: Essential Skills for the successful 21st century biomedical scientist: How to know what you need to know.

What are the most important skills needed to conduct successful research? Learn from others who have been where you are as they discuss essential skills to develop and how to identify your most important training needs.

Discussants include:

- [Tudor Borza, MD](#), urologist and health services researcher, UW-Madison Dept. of Urology, Madison, WI
- [Marvin Langston, PhD](#), K12 Scholar, UCSF-Kaiser Permanente KUroEpi Program, Oakland, CA
- [Casey Steadman, PhD](#), K12 Scholar, Duke University KURe Program, Durham, NC
- [Emily Davidson, MD](#), urogynecologist and surgical outcomes researcher, Medical College of Wisconsin, Milwaukee, WI
- [Chad Vezina, PhD](#), Co-Investigator of the UW-Madison O'Brien Center, Madison, WI

[Zoom Link Here](#)

CAIRIBU ARCTICS Community forums are on the first Wednesdays of each month at 1:00 PM Eastern (12 Central)

September 1, 2021 topic: Paying it Forward: Developing good mentoring and leadership skills.

More information about monthly CAIRIBU ARCTICS Community forums, including materials from prior forums, is [HERE](#)

U54 GEORGE M. O'BRIEN CENTER FOR BENIGN UROLOGY RESEARCH
University of Wisconsin - Madison Department of Urology

presents:



with support from:



Collaborating for the Advancement of Interdisciplinary Research in Benign Urology

2nd Thursday
each month

The K12 Scholar Seminar Series features invited presentations by K12 scholars from Multidisciplinary Urologic Research (KURe) and Urological Epidemiology (KUroEpi) Institutional Research Career Development Programs. The next seminar is:

Note time change for August only!
Thursday, August 12, 2021, 1:00 PM EDT
(12 PM Central | 10 AM Pacific)

Presenter: [Eva Raphael, MD, MPH](#), K12 Scholar, UCSF-Kaiser Permanente KUroEpi Program.

There is growing concern that community-onset urinary tract infections, especially those that are caused by drug-resistant organisms, occur as outbreaks. During her talk, [Dr. Eva Raphael](#) will discuss findings on increasing trends in community-onset drug-resistant E. coli causing urinary tract infections in San Francisco healthcare systems. She will also go over socio-demographic factors associated with UTI caused by drug-resistant E. coli in a public San Francisco healthcare system and discuss spatial clusters of UTI caused by drug-resistant E. coli. This work will highlight the need for public health surveillance of these infections and future approaches to empiric antibiotic therapy for one of the most common infections seen in primary care.

The CAIRIBU K12 Scholar Seminar Series is sponsored by the University of Wisconsin-Madison George M. O'Brien U54 Urology Center.

[Zoom Link Here](#)

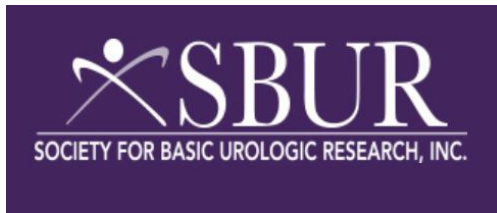
**September 9, 2021 back to 5 PM Eastern
(4 PM Central | 2 PM Pacific)**

Invited speaker: [Guilia Lane, MD](#)
K12 Scholar, University of Michigan
KUroEpi Program.

Topic: Patient Decision Making in Urology

For the schedule of upcoming invited speakers and their topics, go [HERE](#)

SBUR Call for Abstracts



The 2021 SBUR Abstract submission deadline is **August 16th, 2021** at 11:59pm ET. Submit your abstract today! All abstracts submitted will be considered for selection as a virtual poster presentation on the 2021 SBUR Annual Meeting webpage for the duration of one week. Selected abstracts will also be published in the American Journal of Clinical and

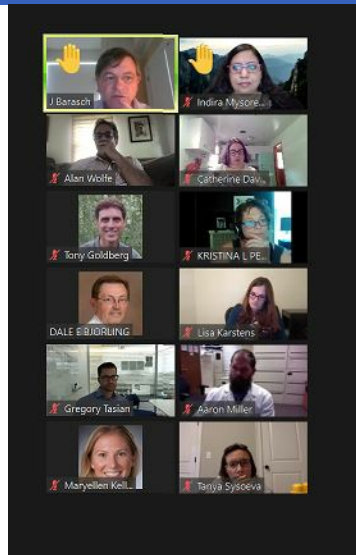
Experimental Urology (AJCEU), exactly as submitted. Instructions for submission can be found [HERE](#). Several merit awards are available, more information is [HERE](#).

CAIRIBU Connections



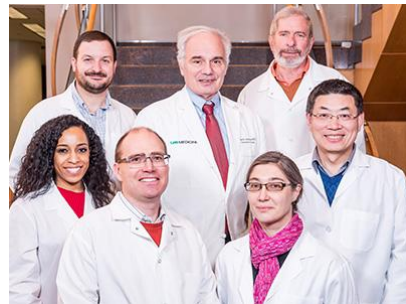
Informal meet-and-greet virtual gatherings of CAIRIBU and non-CAIRIBU investigators who are engaged in similar research. The inaugural event took place on July 21, 2021 with an in-depth discussion on the **lower urinary tract microbiome**.

Expect another CAIRIBU Connections event this fall.



CAIRIBU P20 Exploratory Center Conference on Obesity

The University of Alabama at Birmingham P20 Exploratory Center for Interdisciplinary Research in Benign Urology (the Center for Research on Obesity and Oxalate Kidney Stones) - is hosting a one-day conference on mechanisms and treatment of obesity.



**Friday, August 20, 2021 | 9:00-4:15 PM Central
At University of Alabama at Birmingham**

During the first half of the day, mechanisms and phenotyping of obesity are addressed in talks on metabolic phenotypes of obesity, obesity and the kidney and liver, animal models of obesity, and the microbiome and intestinal permeability in obesity. **The second half of the program addresses obesity treatments** and will feature talks on obesity and kidney stones, lifestyle interventions for obesity, dietary interventions to treat fatty liver disease, and other novel therapeutic approaches for obesity.

If you are interested in obesity in the lower urinary tract Dr. Dean Assimos, PI of the UAB P20 Center, encourages you to attend! For more information and details, go [HERE](#) or contact Dr. Assimos directly (deanassimos@uabmc.edu).

Welcome Cassandra Kisby, MD

to the Multidisciplinary Urologic Research (KURe) Career Development Programs (K12)
at Duke University

Dr. Kisby completed her undergraduate education at Duke University, majoring in Biological Anthropology and Anatomy, Chemistry, and Spanish. She continued her training at Duke University Medical Center

for both medical school and residency. During her Obstetrics and Gynecology residency, she was recognized for both her surgical excellence and dedication to teaching. Dr. Kisby went on to complete a fellowship in Female Pelvic Medicine and Reconstructive Surgery at Mayo Clinic Rochester.

As a KURe scholar, Dr. Kisby will continue her work in women's health regenerative medicine, with the goal of translating regenerative medicine technologies to the bedside to fulfill unmet patient needs. Dr. Kisby's clinical interests include congenital anomalies, mesh complications following pelvic reconstructive surgery, postpartum pelvic floor disorders, pelvic organ prolapse, and urinary incontinence. She is also involved in efforts to create a diverse and inclusive work and patient care environment, as well as equity for women in medicine/science.



GUDMAP
15 Year Jamboree
August 23 & 24

The GenitoUrinary Development Molecular Anatomy Project (**GUDMAP**), funded jointly by the NIDDK and NICHD, was established 15 years ago to create a detailed molecular map of genitourinary tract development. **The benign GU research community is invited to the virtual GUDMAP Jamboree, Monday & Tuesday, August 23-24, 2021.**

This event features invited talks from external speakers; presentations from GUDMAP investigators showcasing their biomedical research and progress; relevant data, resources, breakout groups or discussions around key topics (e.g., bioinformatics, data quality), and tools available in the GUDMAP Hub for the broader communities at large; posters or lightning talks presentations from young investigators; and more [REGISTER HERE](#).



Have You Read?

Are you up to date on the newest research from the CAIRIBU Community?



[Click Here](#)



New in Benign GU Research

Sign up for the "New in Benign Urology Research" mailing list to receive monthly updates

Receive a list of recently published benign GU research once a month; sign up [HERE](#)



Early Career Reviewer (ECR) Program



Center for Scientific Review

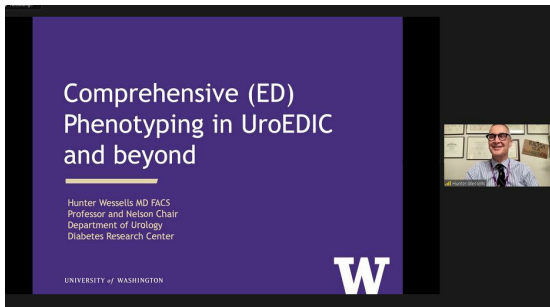
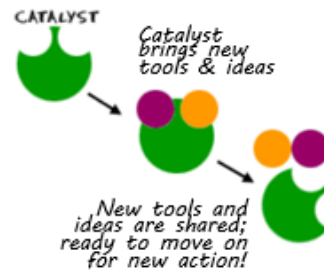
The program aims to help early career scientists become more competitive as grant applicants through first-hand experience with peer review and to enrich and diversify CSR's pool of trained reviewers.

Benefits of ECR

- Work side-by-side with some of the most accomplished researchers in your field to help NIH identify the most promising grant applications
- Learn how reviewers determine overall impact scores
- Improve your own grant writing skills by getting an insider's view of how grant applications are evaluated
- Serve the scientific community by participating in NIH peer review
- Develop research-evaluation and critique-writing skills

Learn more [HERE](#)

The first in the **CAIRIBU Catalyst Conversation** series was held on July 14th and featured **Dr. Hunter Wessells**, urologist and chairman of the Department of Urology at the University of Washington. He discussed the use of surveys and other information-gathering tools among patients in the UroEDIC cohort to phenotype urological complications in type 1 diabetes. Dr. Wessells addressed the development of these tools and the translation of research findings, specifically those related to male erectile dysfunction, to clinical practice and to broader priorities for clinical/translational and basic science research. A panel discussion of epidemiological, clinical, and basic science researchers engaged in benign genitourinary research will followed and discussed how lessons from the UroEDIC study can be adapted to research in other areas of the lower urinary tract and to improvements in clinical management.



A recording of the presentation and following discussion can be found [HERE](#).

Stay tuned for the next **CAIRIBU Catalyst Conversation in November for Bladder Health Month**.

CAIRIBU Convergence Awards



Congratulations to recipients of the CAIRIBU Convergence Awards [Laura Pascal, PhD](#) and [Douglas Strand, PhD](#). Dr. Pascal's project, "Aerobic exercise reduces prostatic inflammation," is funded by the University of Pittsburgh George M. O'Brien Cooperative Urology Center. Her project aims to (1) establish the correlation between central obesity and serum leptin with prostatic macrophage inflammation in human BPH, (2) determine the role of leptin in prostate macrophage inflammation, and (3) determine if leptin decreases integrity of the epithelial barrier by TGF β -1 mediated inhibition of E-cadherin expression. Dr. Strand's project, "Spatial profiling in human BPH/LUTS," is funded by the University of Wisconsin-Madison George M. O'Brien Cooperative Urology Center. The goals of Dr. Strand's project are to optimize immunofluorescence protocols for targets selected by CAIRIBU investigators and perform spatial profiling on select regions of interest in human lower urinary tract specimens.



Email the CAIRIBU Interactions Core

Kristina L. Penniston, PhD, RDN, FAND

PI, CAIRIBU U24 Interactions Core
(U24-DK127726)

Department of Urology
University of Wisconsin
School of Medicine and Public Health
1685 Highland Avenue, 3rd floor MFCB
Madison, WI 53705-2281