

# Here is the October 2020 CAIRIBU Communique



## CAIRIBU COMMUNITY COMMUNIQUE

Collaborating for the Advancement of  
Interdisciplinary Research in Benign Urology

### ***CAIRIBU Annual Meeting - "Crossing the Disciplinary Divide"***

Thursday and Friday, December 3-4, 2020 via Zoom | Register [HERE](#) (it's free)

#### **ABSTRACTS - DEADLINE OCTOBER 1, 2020**

Research abstracts from within the CAIRIBU Community are currently being accepted. [Click here](#) for abstract preparation and submission details. All abstracts will be reviewed by unbiased experts. **"Best Abstract" awards** will be given to those scoring highest. Additionally, after the moderated poster session on December 3 (from 4:30-6:30 p.m. Eastern Time), **"Best Poster" awards** will be given. The criteria for selecting these awards will consider presenters' 1-minute oral presentations as well as their posters.

#### **TRAINEES-ONLY EVENT - THURSDAY, DECEMBER 3**

A trainee-oriented event is planned for 12/03/2020 prior to the official start of the CAIRIBU meeting at 12:30 p.m. Eastern Time. The event was planned by a trainee-led planning committee and will feature topics that were identified as most important to CAIRIBU trainees in a survey distributed earlier this month. There is no need to register separately for this; but please do register for the CAIRIBU meeting [here](#).

### ***Now Accepting Applications!!!***

## **Duke University Multidisciplinary K12 Urologic Research (KURe) Center Career Development Program**

#### ***Multyear Diversity Supplement for Applicants from Underrepresented Groups***

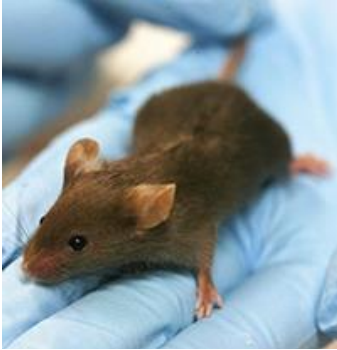
This NIDDK-funded program supports the career development of clinicians and non-clinicians to develop the skills necessary to initiate and sustain an independent research career and advance the field of benign urology. The KURe provides individualized mentoring, emphasizes multidisciplinary research and the importance of diverse scientific methods, and prepares KURe Scholars to lead their own research teams and become the mentors and leaders of tomorrow. NIDDK has particular interest in expertise outside of clinical urology.

**Support.** \*Salary and protected time for 50-75% of full-time professional effort; \*\$30,000/year for research expenses; \*\$10,000/year for professional career development, basic and clinical research training course work, and conference travel; \*Individual Leadership Enhancement Coaching; \*Access to clinical environment and procedures.

**Requirements.** \*Doctoral degree; \*US citizenship or permanent residency; \*No more than 7 years of post-doctoral research experience (not including clinical fellowship); from groups underrepresented in biomedical research (racial/ethnic underrepresentation, individuals with disabilities, individuals from disadvantaged backgrounds).

**Applications.** Letter of Intent required: November 1, 2020. Information: [KURe.medschool.duke.edu](http://KURe.medschool.duke.edu)

## **Symposium - "Lower Urinary Tract Function Testing in Mice"**



This half-day FREE virtual symposium will address how to get the most out of lower urinary tract function testing in mice. It will be held **Thursday, October 29** from 1:00-5:00 p.m. Eastern Time. [REGISTER HERE.](#)

Presenters will include experts in the field including Dale Bjorling, DVM, MS; Chad Veizin, PhD; Kimberly Stietz, PhD; and Will Ricke, PhD (all of UW-Madison); Maryrose Sullivan, PhD; Warren Hill, PhD; and Rosalyn Adam, PhD (Harvard University); Matthew Fraser, PhD (Duke University); and Mike Ruggieri, Sr., PhD (Temple University).

The event is sponsored by the **University of Wisconsin-Madison Department of Urology George M. O'Brien Research Center** and with support from the NIH/NIDDK.

---

## **Seven-Week Virtual Symposium on Female Urethra Function and Failure**

**"Advancing Basic Translational Research for Genitourinary Conditions: Female Urethra Function and Failure."** This series of seven free weekly workshops begins Wednesday, September 20 and runs weekly through November 18, 2020, from 4:00-5:30 p.m. Eastern Time. This iterative workshop series will generate a systems model that demonstrates what is known about the urethra's role in continence and identifies knowledge gaps that impede progress toward better treatments. The generation of a systems model incorporating interdisciplinary perspectives will facilitate development of meaningful research questions that can lead to novel, impactful grant applications with the important goal of improving women's health. View event details and register [here](#). Each session will convene basic, translational, and clinical researchers at all stages of their careers. Health professionals, patients, and industry representatives will also participate in some sessions.

---

## **SBUR Meeting - "Cellular Interactions and Identities in Urologic Biology"**

The annual meeting of the Society for Basic Urologic Research (SBUR) is virtual this year and is scheduled for **November 11-14, 2020**. To view the agenda and to register for the meeting, click [here](#). The abstract deadline has passed.

---

## **Who is CAIRIBU?**

CAIRIBU is an umbrella organization of NIDDK-funded Programs and Centers dedicated to benign genitourinary research and training. For background and other information, go to the [CAIRIBU website](#). Below are the types of Centers and Programs in CAIRIBU.

- **George M. O'Brien Urology U54 Cooperative Research Centers** (3 Centers)
- **P20 Exploratory Centers for Interdisciplinary Research in Benign Urology** (11 Centers)
- **K12 Urological Epidemiology Institutional Career Development Programs** (2 Programs)
- **K12 Multidisciplinary Urologic Research Career Development Programs** (2 Programs)

CAIRIBU is supported by NIDDK Program Officers: Chris Mullins, PhD, Program Official; and Tamara Bavendam, MD, MS, Project Scientist. Kristina Penniston, PhD, is the CAIRIBU coordinator and PI of the U24 Urology Centers Program Interactions Core (U24-DK-127726)